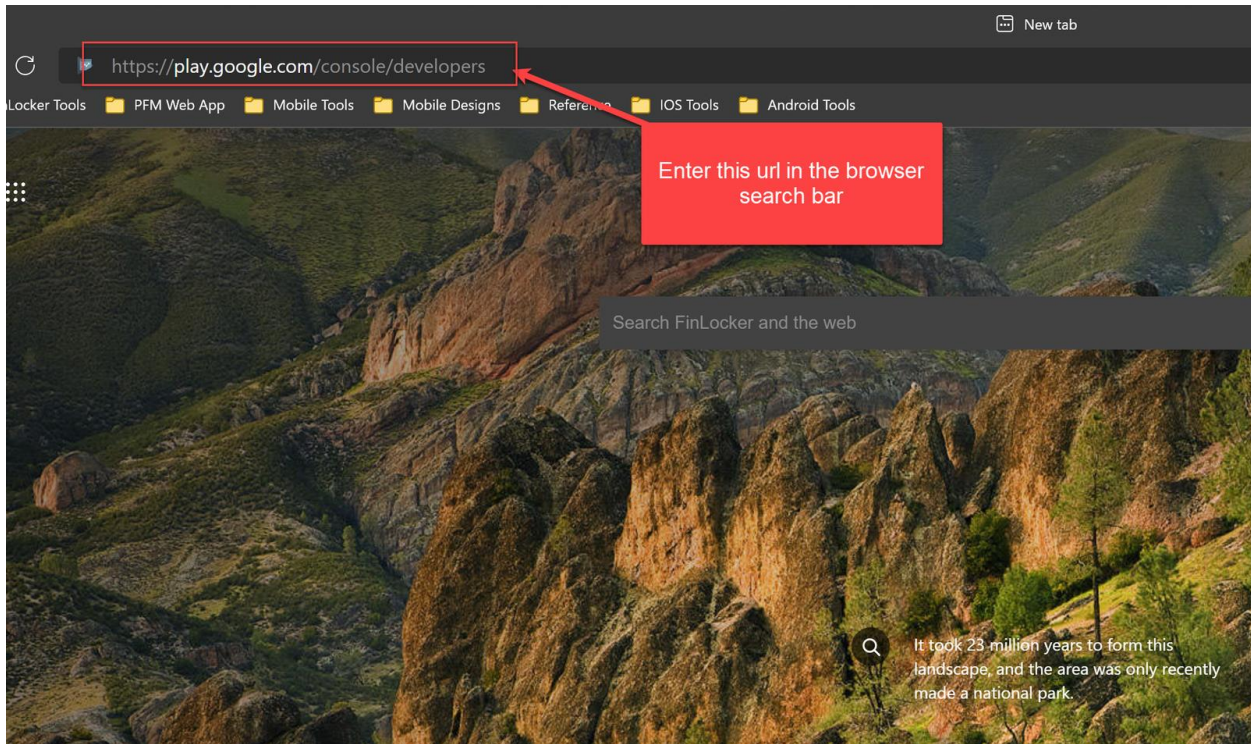


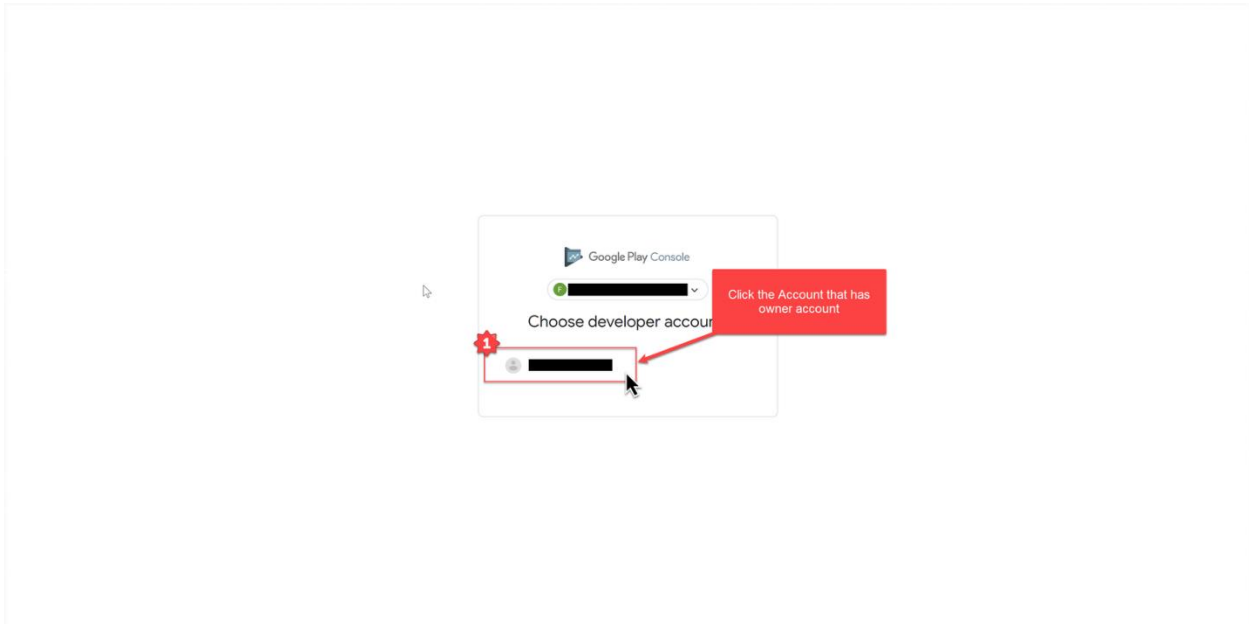
1.



2.



3.



4.

Google Play Console

All apps

View all of the apps and games you have access to in your developer account

We're experiencing longer than usual review times

Pinned apps

Pin apps here to access them quickly, and view key metrics

2 apps

Filter by: All

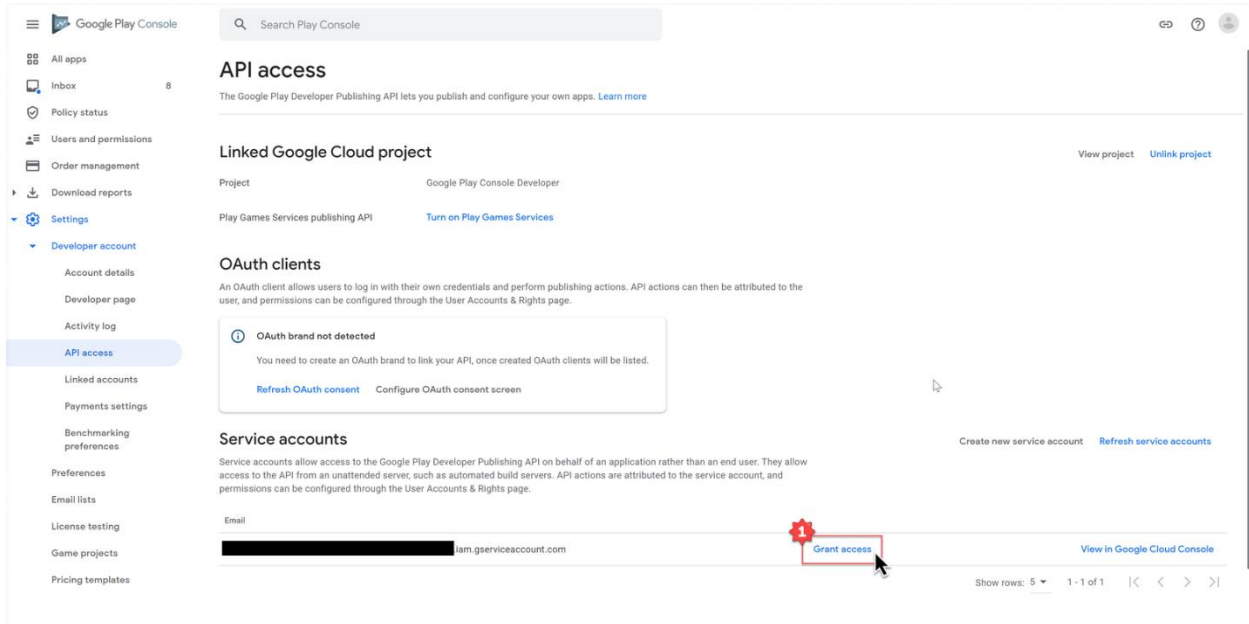
Search by app or package name

App	Installed audience	App status	Update status	Last updated		
[Redacted]	0	Open testing		Aug 18, 2020	⌵	View app
[Redacted]	0	Internal testing		Aug 10, 2020	⌵	View app

Show rows: 10 1 - 2 of 2

© 2021 Google · Mobile app · Terms of Service · Privacy · Developer Distribution Agreement

5.



The screenshot shows the Google Play Console interface. On the left is a navigation sidebar with 'API access' highlighted. The main content area is titled 'API access' and includes sections for 'Linked Google Cloud project', 'OAuth clients', and 'Service accounts'. A red box highlights the 'Grant access' button in the 'Service accounts' table. A red gear icon is also present above the table.

API access

The Google Play Developer Publishing API lets you publish and configure your own apps. [Learn more](#)

Linked Google Cloud project [View project](#) [Unlink project](#)

Project: Google Play Console Developer

Play Games Services publishing API [Turn on Play Games Services](#)

OAuth clients

An OAuth client allows users to log in with their own credentials and perform publishing actions. API actions can then be attributed to the user, and permissions can be configured through the User Accounts & Rights page.

OAuth brand not detected

You need to create an OAuth brand to link your API, once created OAuth clients will be listed.

[Refresh OAuth consent](#) [Configure OAuth consent screen](#)

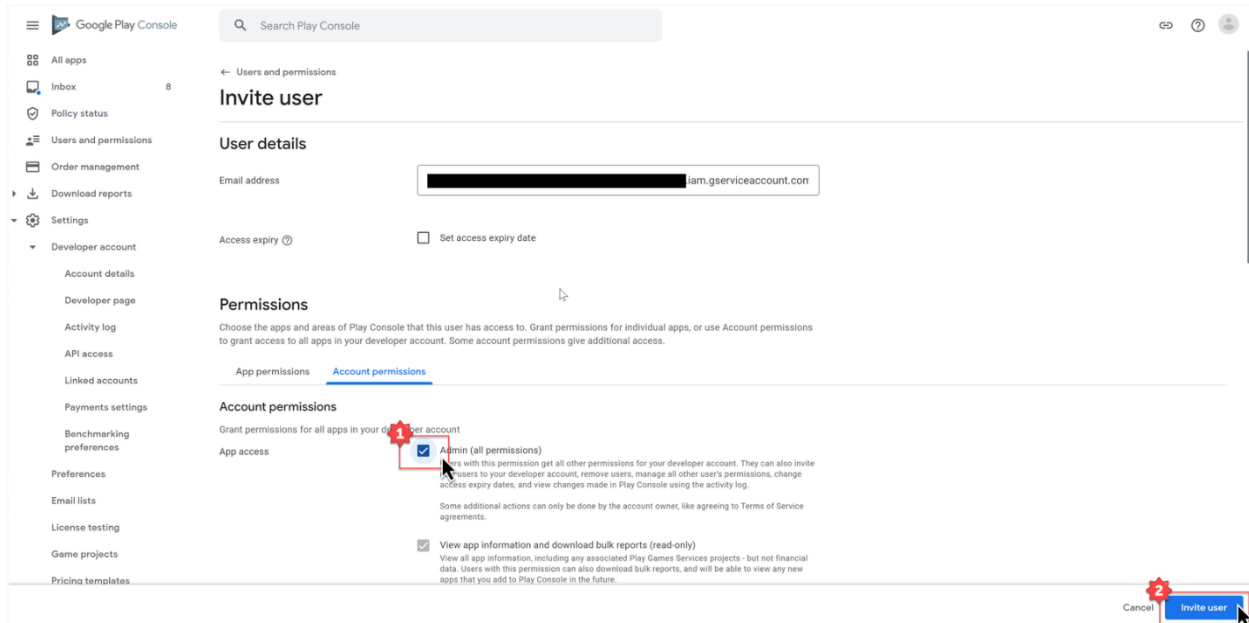
Service accounts [Create new service account](#) [Refresh service accounts](#)

Service accounts allow access to the Google Play Developer Publishing API on behalf of an application rather than an end user. They allow access to the API from an unattended server, such as automated build servers. API actions are attributed to the service account, and permissions can be configured through the User Accounts & Rights page.

Email	Grant access	View in Google Cloud Console
[redacted]@iam.gserviceaccount.com	Grant access	View in Google Cloud Console

Show rows: 5 1 - 1 of 1 < > >>

6.



The screenshot shows the 'Invite user' page in Google Play Console. The 'Permissions' section is expanded to 'Account permissions', where 'Admin (all permissions)' is selected. A red box highlights the 'Admin (all permissions)' checkbox and the 'Invite user' button at the bottom right. A red gear icon is also present above the permissions list.

Invite user

User details

Email address: [redacted]@iam.gserviceaccount.com

Access expiry Set access expiry date

Permissions

Choose the apps and areas of Play Console that this user has access to. Grant permissions for individual apps, or use Account permissions to grant access to all apps in your developer account. Some account permissions give additional access.

[App permissions](#) [Account permissions](#)

Account permissions

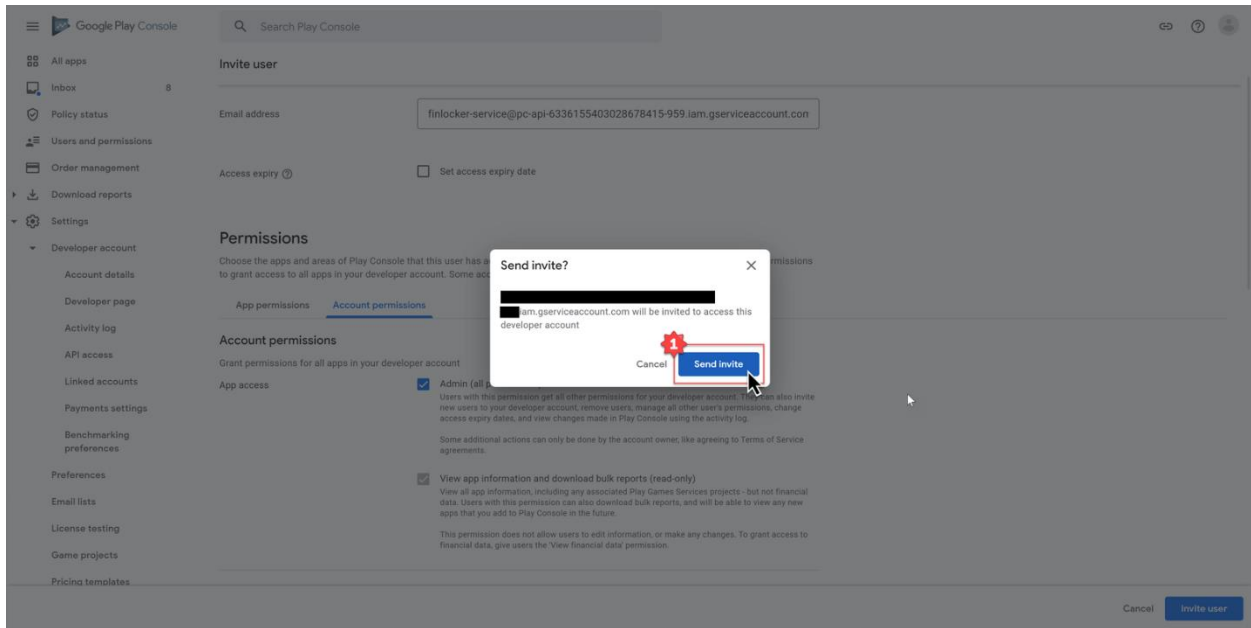
Grant permissions for all apps in your developer account

App access

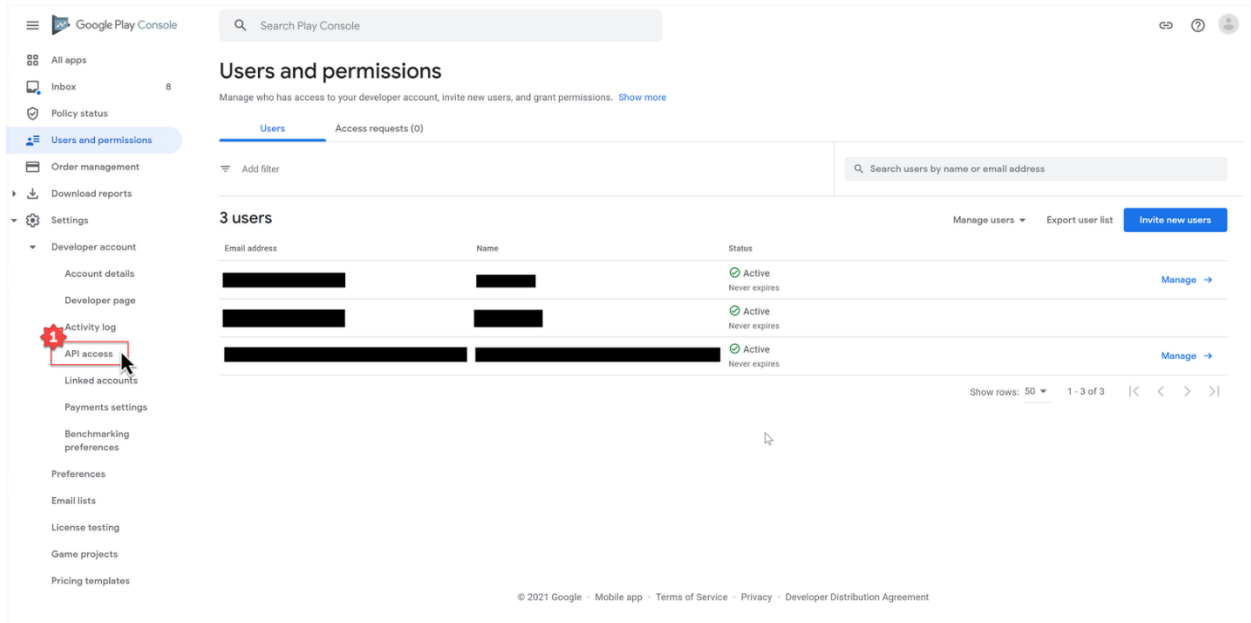
- Admin (all permissions)**
Users with this permission get all other permissions for your developer account. They can also invite users to your developer account, remove users, manage all other user's permissions, change access expiry dates, and view changes made in Play Console using the activity log.
Some additional actions can only be done by the account owner, like agreeing to Terms of Service agreements.
- View app information and download bulk reports (read-only)**
View all app information, including any associated Play Games Services projects - but not financial data. Users with this permission can also download bulk reports, and will be able to view any new apps that you add to Play Console in the future.

Cancel [Invite user](#)

7.



8.



9.

API access
The Google Play Developer Publishing API lets you publish and configure your own apps. [Learn more](#)

Linked Google Cloud project [View project](#) [Unlink project](#)

Project: Google Play Console Developer

Play Games Services publishing API [Turn on Play Games Services](#)

OAuth clients
An OAuth client allows users to log in with their own credentials and perform publishing actions. API actions can then be attributed to the user, and permissions can be configured through the User Accounts & Rights page.

OAuth brand not detected
You need to create an OAuth brand to link your API, once created OAuth clients will be listed.
[Refresh OAuth consent](#) [Configure OAuth consent screen](#)

Service accounts
Service accounts allow access to the Google Play Developer Publishing API on behalf of an application rather than an end user. They allow access to the API from an unattended server, such as automated build servers. API actions are attributed to the service account, and permissions can be configured through the User Accounts & Rights page.

Email	View access	Refresh service accounts
[REDACTED]@iam.gserviceaccount.com	View access	Refresh service accounts

Show rows: 5 1 - 1 of 1